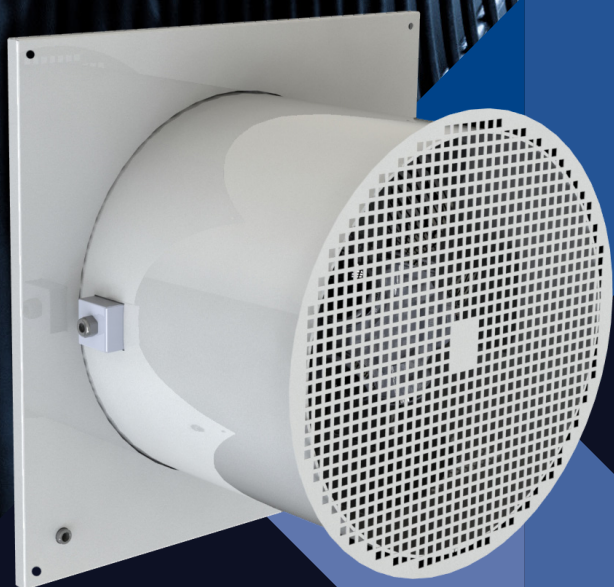


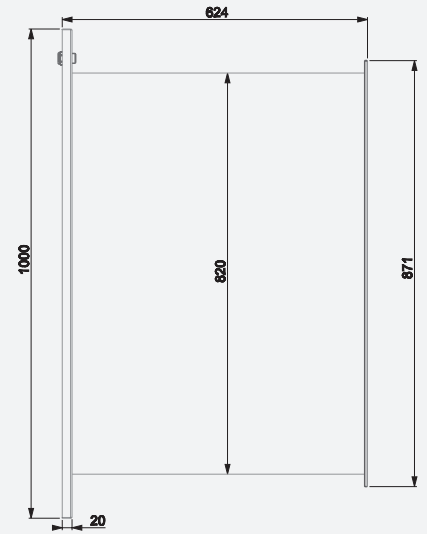
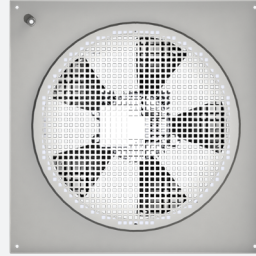


STORGE | STG - AFSW 800 EC FAN
MAY_2024_V 0.4



**STG - AFSW 800 EC
FAN**

STG AFSW800EC



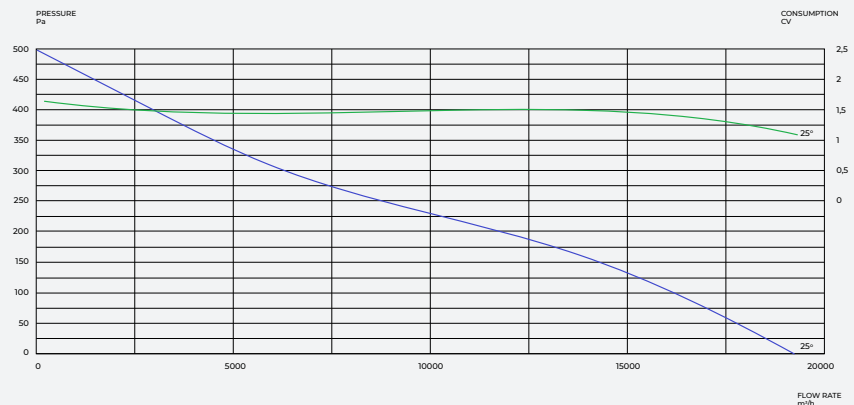
With its embedded electronics, the EC motor rotation can be precisely controlled (without the use of frequency inverters) based on an external signal such as sensors, controllers, or automation systems. Request more information about our STG controllers, which can be used alongside EC fans via wireless network, allowing you to control your fan through your cell phone or computer. And you can control all these variables through your cell phone, observing real-time operation. Storge Engineering provides complete solutions using electronic fans integrated into our automation systems for applications such as: ventilation and exhaust in garages, air renewal, pressurized stairwells, FanCoils and AHU retrofits, among others.

CAPTION	STORGE	AXIAL FAN STANDART	DIAMETER	ELECTRONIC
	DESCRIPTION	AFSW	800	EC

DESCRIPTION	CORRESPONDENCE
MODEL	STG-AFSW800EC
MOTOR	ELETRÔNICO
PHASE	SINGLE-PHASE / TWO-PHASE
NOMINAL VOLTAGE [V]	220
FREQUENCY [HZ]	60
(RPM) MIN	1 - 1300
POWER [KW]	1.1
MINIMUM AMBIENT TEMPERATURE [°C]	°C -40
MAXIMUM AMBIENT TEMPERATURE [°C]	°C 60
MAXIMUM FLOW RATE [M ³ /H]	19.300 m ³ /h
MAXIMUM NOISE LEVEL	81dB(A) FREE



STG - AFSW800EC



STORGE

477 MARIALVA STREET – BLOCK 12, LOT 13A1, EMILIANO PERNETA, 83324-197, PINHAIS – PR – +55 41 3056-3431
STORGEENGENHARIA.COM.BR