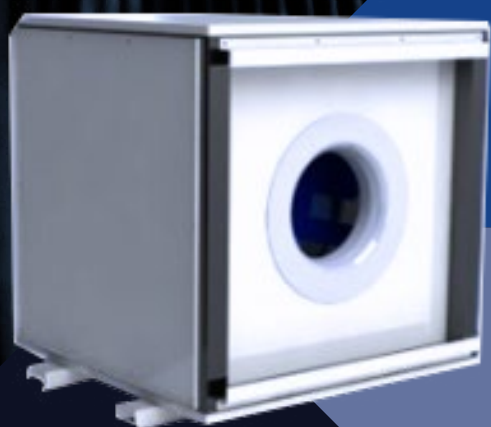




STORGE | SQUARE VENTILATION BOX STG VBQ
MAY_2024_V 0.4



**STG - VBQ
SQUARE
VENTILATION
BOX**

STG VBQ

Square Ventilation Box

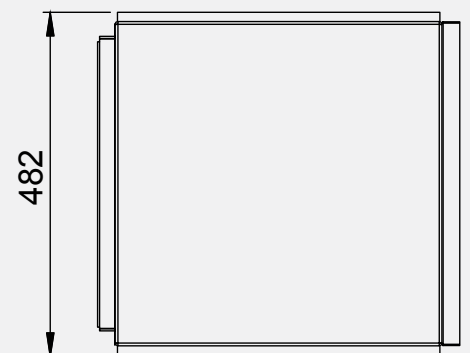
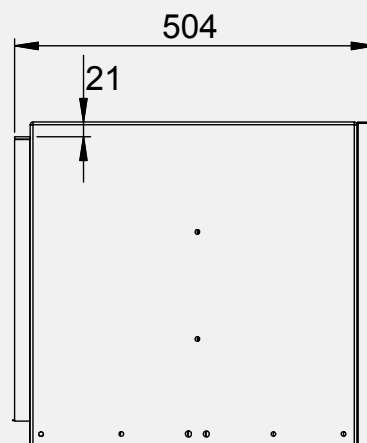
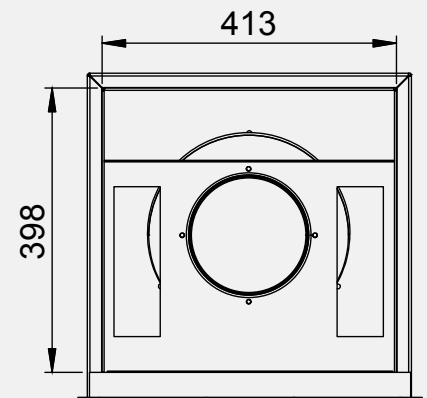
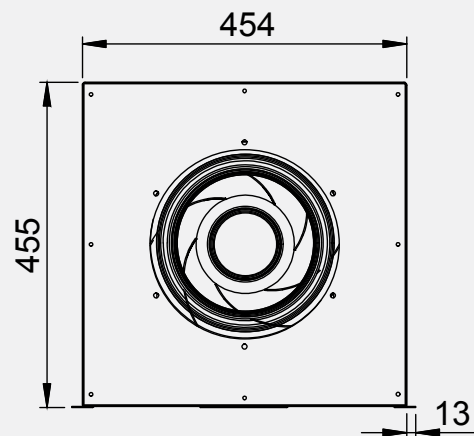


**Air renewal /
Exhaust of bathrooms and environments in general**



MODEL	STG-VBQ 250 EC	STG-VBQ 280 EC	STG-VBQ 400 EC
MOTOR	ELECTRONIC	ELECTRONIC	ELECTRONIC
PHASE	TWO-PHASE	TWO-PHASE	SINGLE-PHASE TWO-PHASE TRI-PHASE
NOMINAL VOLTAGE [V]	220	220	220
FREQUENCY [Hz]	60	60	60
(RPM) MIN	3.650	3.270	1.800
MAXIMUM FLOW [m³/h]	2.350 m³/h	3.650 m³/h	5.300 m³/h
MAXIMUM CONSUMPTION [CV]	0,7	0,95	1,5

With its embedded electronics, the EC motor rotation can be precisely controlled (without the use of frequency inverters) based on an external signal such as sensors, controllers, or automation systems. Request more information about our STG controllers, which can be used alongside EC fans via wireless network, allowing you to control your fan through your cell phone or computer. And you can control all these variables through your cell phone, observing real-time operation. Storge Engineering provides complete solutions using electronic fans integrated into our automation systems for applications such as: ventilation and exhaust in garages, air renewal, pressurized stairwells, FanCoils and AHU retrofits, among others.

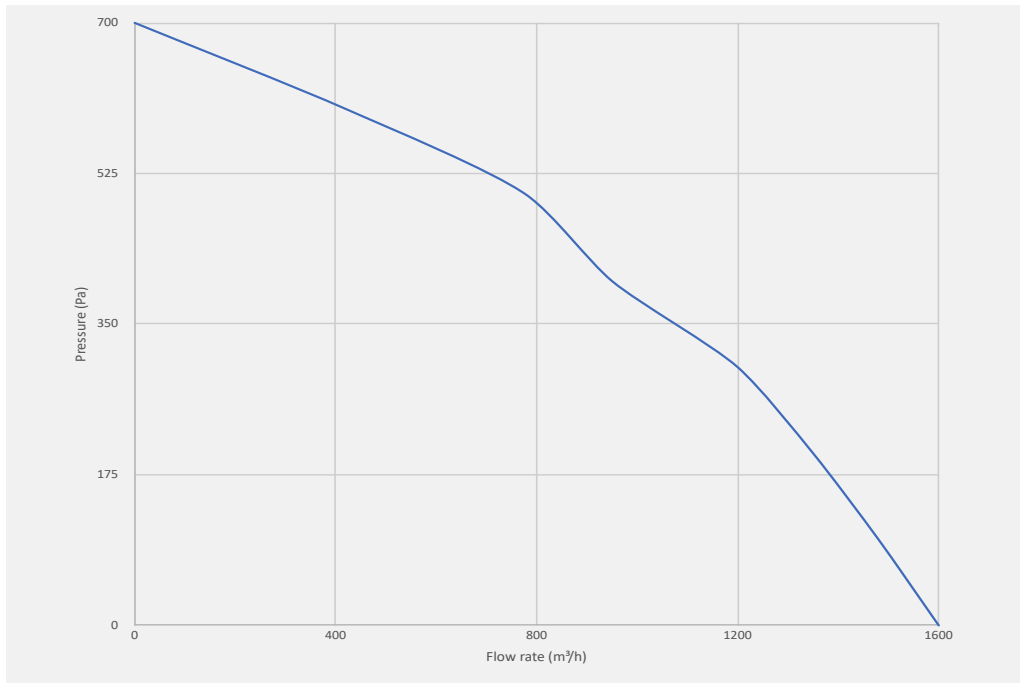


STORGE

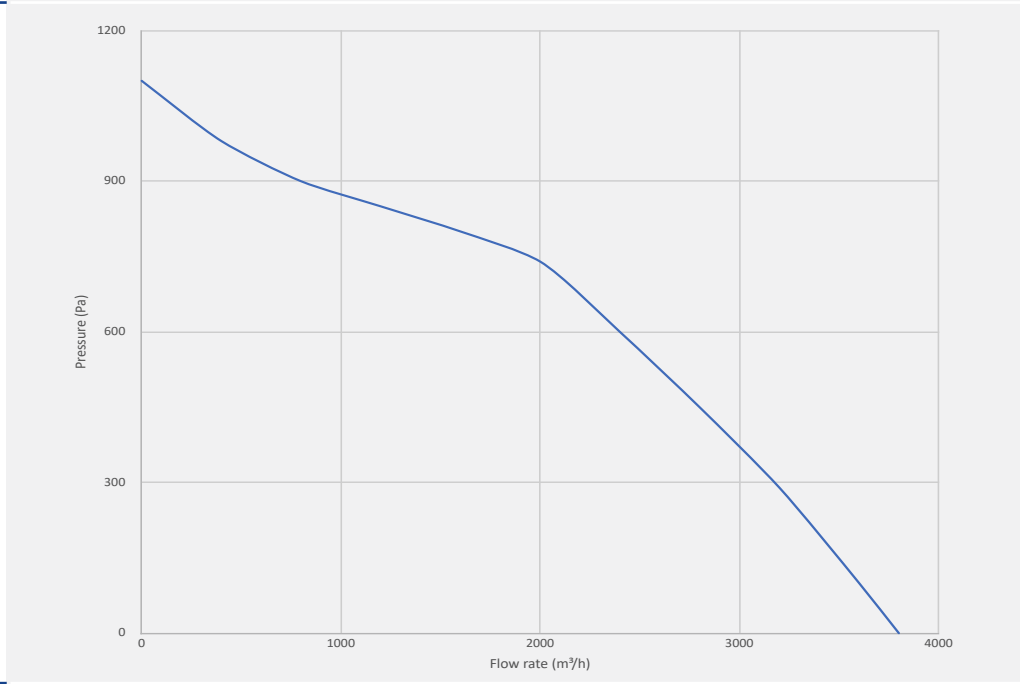
477 MARIALVA STREET – BLOCK 12, LOT 13A1, EMILIANO PERNETA, 83324-197, PINHAIS – PR – +55 41 3056-3431
STORGEENGENHARIA.COM.BR

Flow Rate

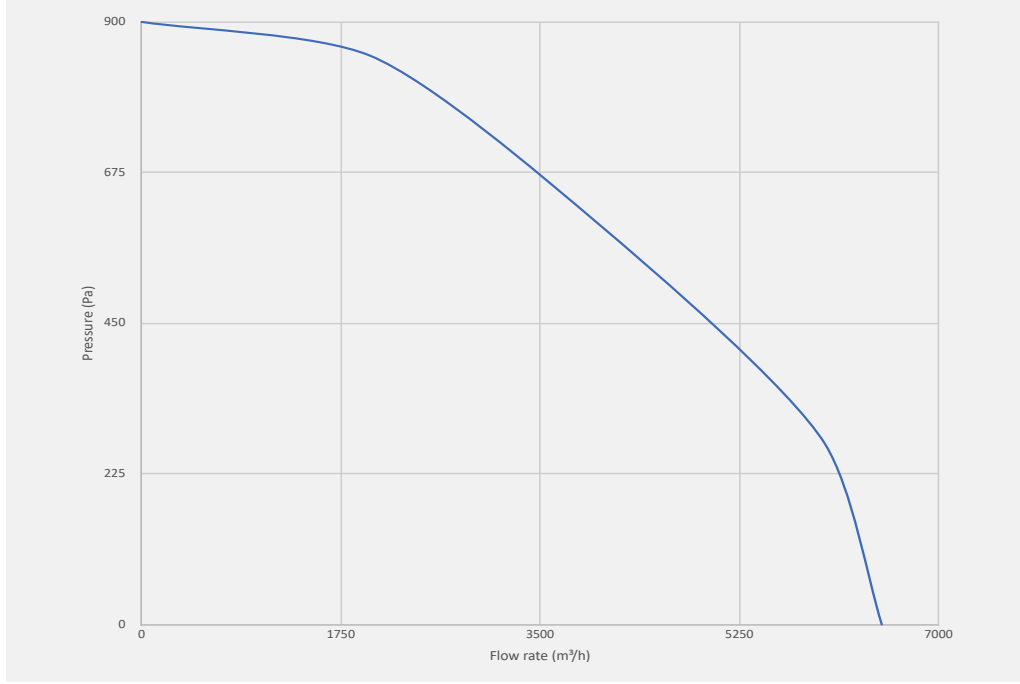
STG-VBQ 250 EC



STG-VBQ 280 EC



STG-VBQ 400 EC



STORGE

477 MARIALVA STREET – BLOCK 12, LOT 13A1, EMILIANO PERNETA, 83324-197, PINHAIS – PR – +55 41 3056-3431

STORGEENGENHARIA.COM.BR