



STORGE | COMPACT VENTILATION BOX STG-VB
MARCH_2024_V 0.1



—
**COMPACT
VENTILATION BOX
STG-VB**
—

COMPACT VENTILATION BOX STG-VB

THE STG-VB COMPACT VENTILATION BOX BRINGS TOGETHER THE BEST IN TERMS OF TECHNOLOGY, RELIABILITY, AND EFFICIENCY.

It features options for AC fans with fixed speed and EC fans with variable speed.

Low-profile products ideal for ventilation applications in the plenum, both for supply and exhaust, with various filtering options.

THE VENTILATION BOX CAN BE ACTIVATED AND CONTROLLED THROUGH STG CONTROLLERS, WITH OPTIONAL CONTROLS FOR AIRFLOW, AIR QUALITY, AMONG OTHERS.

GENERAL TECHNICAL CHARACTERISTICS

- Cabinet constructed with welded tubular steel structure, with trays and collars in galvanized steel sheets and TDC corner for quick and easy connection to ductwork.
- Snow-white epoxy paint, with plastic handles and a pull handle for maintenance access.
- Prepared for suspended mounting. Filter modules can be added.
- Connection of the ventilation box can be ducted or with a lid with optional collar.



STG-IHM DISPLAY



SOLD SEPARATELY. COMPATIBLE WITH ALL STG CONTROLLERS.

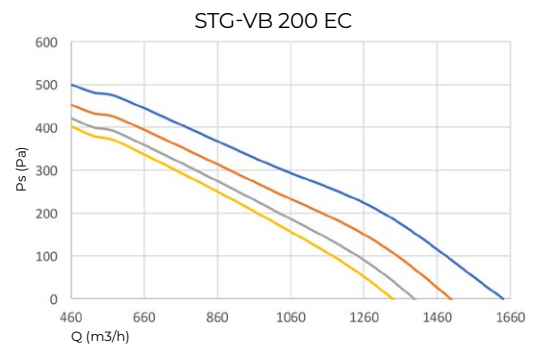
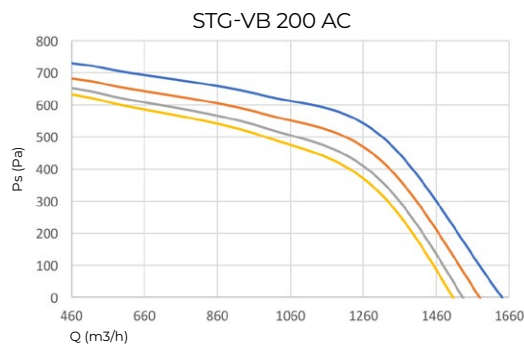
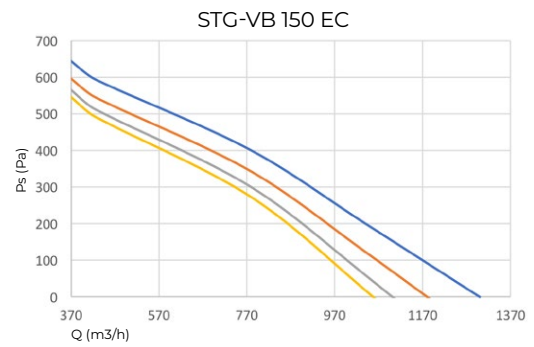
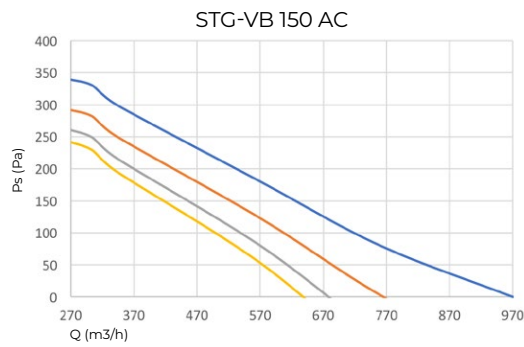
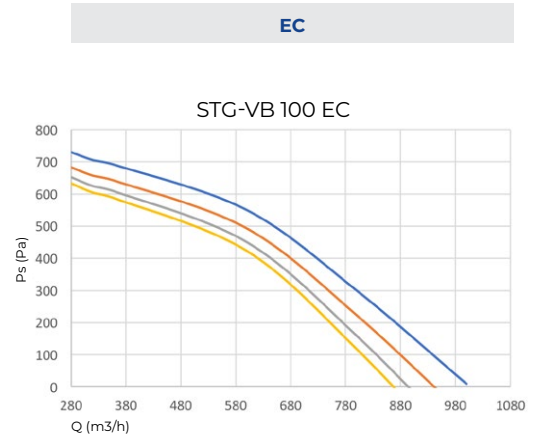
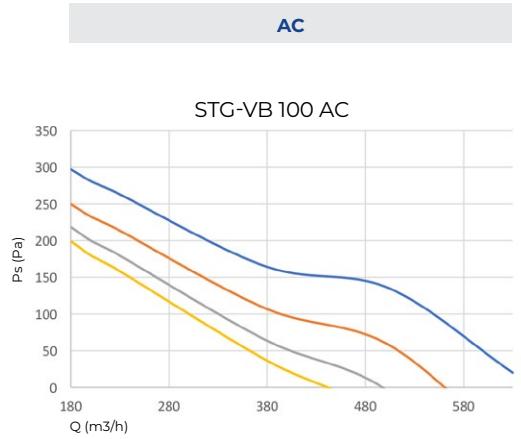
MODEL	OPTIONAL COLLAR DIAMETER	FAN TYPE	MAXIMUM AIRFLOW (m³/h)	MAXIMUM TOTAL STATIC PRESSURE	MOTOR ROTATION SPEED (rpm)	MAXIMUM NOISE LEVEL (dBA)	MOTOR POWER (W)	MAXIMUM CURRENT (A)
STG-VB100EC	100 MM	EC - VARIABLE SPEED	1000	850 Pa	4100	69	170	1,3
STG-VB150EC	150 MM	EC - VARIABLE SPEED	1300	950 Pa	3200	69	165	1,1
STG-VB200EC	200 MM	EC - VARIABLE SPEED	1640	900 Pa	2800	69	162	1,2
STG-VB100AC	100 MM	AC - FIXED SPEED	630	425 Pa	3000	61	80	0,4
STG-VB150AC	150 MM	AC - FIXED SPEED	950	500 Pa	3000	68	139	0,5
STG-VB200AC	200 MM	AC - FIXED SPEED	1640	900 Pa	3400	68	387	1,7

STORGE

477 MARIALVA STREET – BLOCK 12, LOT 13A1, EMILIANO PERNETA, 83324-197, PINHAIS – PR – +55 41 3056-3431
STORGEENGENHARIA.COM.BR

PERFORMANCE CURVES

— Sem Filtros
 — G4
 — G4+M5
 — G4+F8



SPARE PARTS

CODE	DESCRIPTION
STG-VB100AC-FP-G4	Flat synthetic G4 filter for box VB100AC
STG-VB150AC-FP-G4	Flat synthetic G4 filter for box VB150AC
STG-VB200AC-FP-G4	Flat synthetic G4 filter for box VB200AC
STG-VB100EC-FP-G4	Flat synthetic G4 filter for box VB100EC
STG-VB150EC-FP-G4	Flat synthetic G4 filter for box VB150EC
STG-VB200EC-FP-G4	Flat synthetic G4 filter for box VB200EC
STG-VB100AC-FP-M5	Flat synthetic M5 filter for box VB100AC
STG-VB150AC-FP-M5	Flat synthetic M5 filter for box VB150AC
STG-VB200AC-FP-M5	Flat synthetic M5 filter for box VB200AC
STG-VB100EC-FP-M5	Flat synthetic M5 filter for box VB100EC
STG-VB150EC-FP-M5	Flat synthetic M5 filter for box VB150EC
STG-VB200EC-FP-M5	Flat synthetic M5 filter for box VB200EC
STG-VB100AC-FP-F8	Flat synthetic F8 filter for box VB100AC
STG-VB150AC-FP-F8	Flat synthetic F8 filter for box VB150AC
STG-VB200AC-FP-F8	Flat synthetic F8 filter for box VB200AC
STG-VB100EC-FP-F8	Flat synthetic F8 filter for box VB100EC
STG-VB150EC-FP-F8	Flat synthetic F8 filter for box VB150EC
STG-VB200EC-FP-F8	Flat synthetic F8 filter for box VB200EC

STORGE

477 MARIALVA STREET – BLOCK 12, LOT 13A1, EMILIANO PERNETA, 83324-197, PINHAIS – PR – +55 41 3056-3431
STORGEENGENHARIA.COM.BR

CODIFICATION

STG - VB - - - - -

1 2 3 4 5

1 - Size / Collar Diameter (mm)

100

150

200

2 - Fan Type

AC - Fixed Speed

EC - Variable Speed

3 - Filtration

00 - No filter

F8 - Only F8 filter

G4 - Only G4 filter

M5 - Only M5 filter

4 - Lid with Collar

00 - No lids.

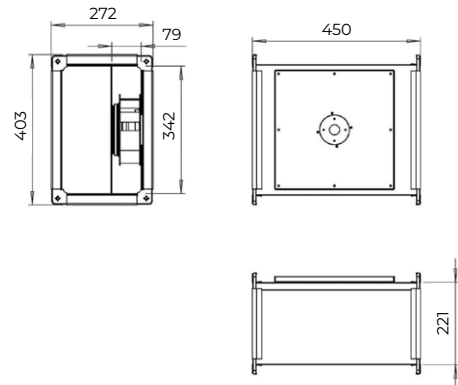
TP - With lids.

5 - Power Supply

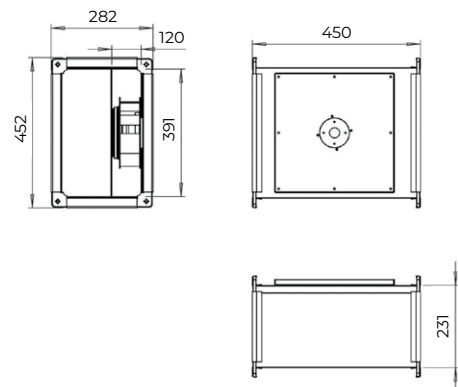
220V/1F/60Hz

DIMENSIONAL DRAWING (MM)

VB100 AC/EC



VB150 - 200 AC/EC

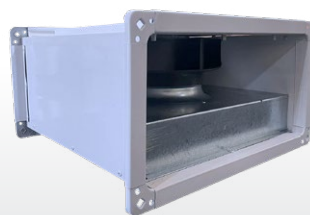


POSSIBLE INTEGRATIONS WITH STORGE CONTROLLERS



stgVB

MOTOR CONTROL BASED ON THE CHOSEN PARAMETERS



+



STG02 - CPD FOR AIRFLOW CONTROL

STORGE

477 MARIALVA STREET - BLOCK 12, LOT 13A1, EMILIANO PERNETA, 83324-197, PINHAIS - PR - +55 41 3056-3431

STORGEENGENHARIA.COM.BR